



# Gamme de brosses ø 120x100 mm

ø 120x100 mm brushes range

## REF. 800301

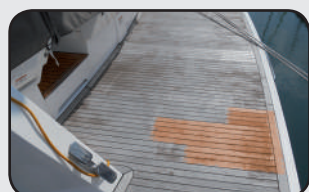
Acier laitoné  
Steel brush

Décapage fort  
Heavy stripping

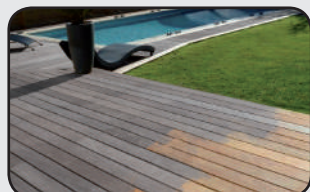
Fil Wire ø 0,3 mm



x 1 pc



Décaper le bois  
Stripping the wood



Retrouver l'éclat d'origine  
Find the original shine

## REF. 800302

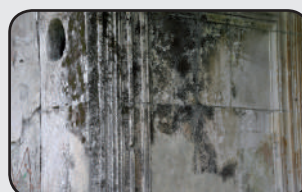
Fil nylon  
Nylon wire

Brossage léger  
Light brushing

Fil abrasif  
Abrasive wire



x 1 pc



Brosser les impuretés de la pierre  
Brush impurities from the stone



Nettoyer et brosser le bois  
Clean and brush the wood

### Informations logistiques - Logistic information

Dimensions emballage - Pack size 537x340x294 mm

Gencod - EAN Barcode



### Informations logistiques - Logistic information

Dimensions emballage - Pack size 537x340x294 mm

Gencod - EAN Barcode



## REF. 800303

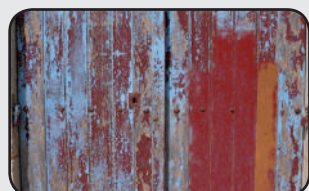
Lamelles abrasives  
Abrasive strips

Dégrossissage  
Roughing

Gros grain 40  
Large grit 40



x 2 pcs



Travailler sur surfaces planes  
Work on flat surfaces



Ponçage 1er passage, gros grain  
1st sanding passage, big grit

## REF. 800305

Lanières abrasives  
Abrasive flaps

1<sup>er</sup> ponçage  
1<sup>st</sup> sanding passage

Gros grain 40  
Large grit 40



x 2 pcs



Dégrossir  
Roughing



Respecter les surfaces courbes  
Respects curved surfaces

### Informations logistiques - Logistic information

Dimensions emballage - Pack size 537x340x294 mm

Gencod - EAN Barcode



### Informations logistiques - Logistic information

Dimensions emballage - Pack size 537x340x294 mm

Gencod - EAN Barcode



## REF. 800304

Lamelles abrasives  
Abrasive strips

Ponçage de finition  
Finishing sanding

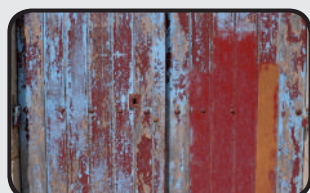
Grain fin 80  
Small grit 80



x 2 pcs



Décaper les surfaces planes  
Strip flat surfaces



Ponçage de finition  
Finishing sanding

## REF. 800306

Lanières abrasives  
Abrasive flaps

Ponçage de finition  
Finishing sanding

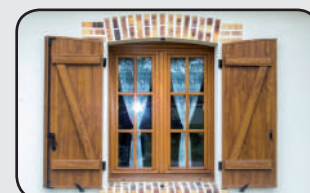
Grain fin 80  
Small grit 80



x 2 pcs



Finition pour surfaces courbes  
Finishing for curved surfaces



Respecter les matériaux  
Respects curved surfaces

### Informations logistiques - Logistic information

Dimensions emballage - Pack size 537x340x294 mm

Gencod - EAN Barcode



### Informations logistiques - Logistic information

Dimensions emballage - Pack size 537x340x294 mm

Gencod - EAN Barcode

